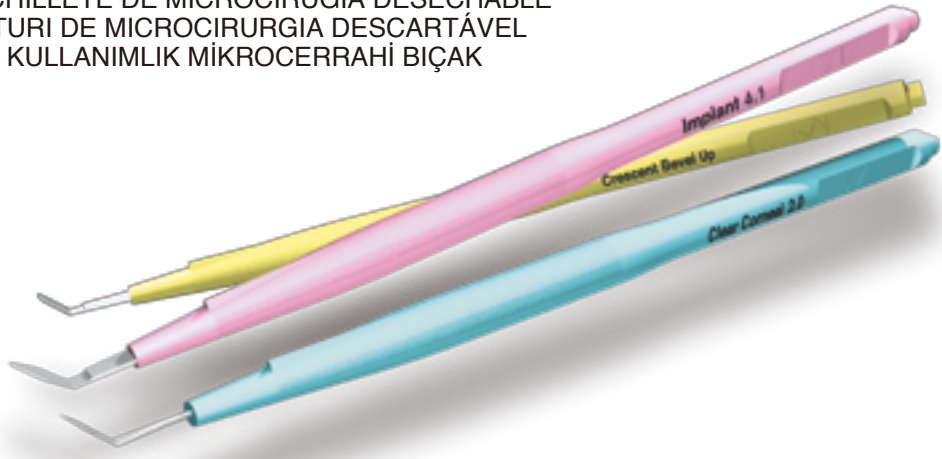


# MICROSURGERY KNIVES

MIKROCHIRURGISCHES EINMALMESSER  
BISTOURI POUR MICROCHIRURGIE JETABLE  
BISTURI MONOUSO PER MICROCHIRURGIA  
CUCHILLETE DE MICROCIURUGIA DESECHABLE  
BISTURI DE MICROCIURUGIA DESCARTÁVEL  
TEK KULLANIMLIK MİKROCERRAHİ BIÇAK



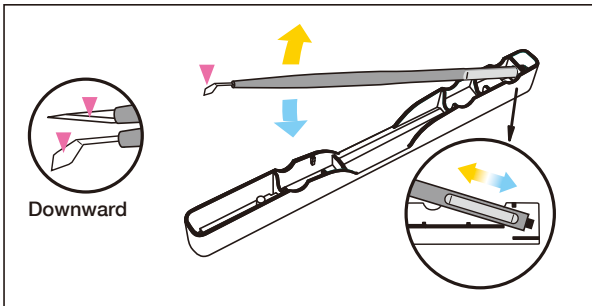


STAB KNIVES -----	3	page
CRESCENT KNIVES -----	4	
BLEB KNIVES -----	4	
SLIT KNIVES -----	5	
CLEAR CORNEAL KNIVES -----	6	
TRAPEZOID KNIVES -----	7	
IMPLANT KNIVES -----	8	
MVR KNIVES -----	9	
PARACENTESIS KNIVES -----	9	
SIDEPORT KNIVES -----	10	

## Regular Type



Sterile and ready to use  
Each knife in a protection tray  
5 pieces per dispenser box  
GS1-128 bar-code

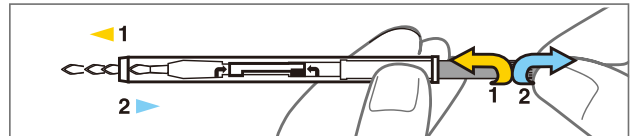


## Safety Type



Sterile and ready to use  
Blade covered with protective sheath  
5 pieces per dispenser box  
GS1-128 bar-code

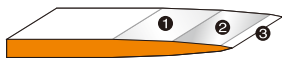
Blade protection allows safety handling and avoids accidental injuries  
Precisely engineered design for easy twist and glide action with both hands



# STAB KNIVES

Cataract Surgery / Scleral Tunnel Incision - Pregroove, Side port  
/ Clear Corneal Incision - Side port

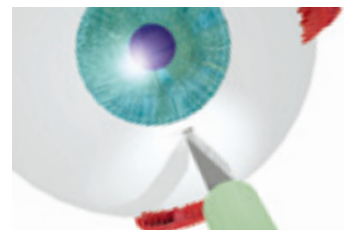
Precisely ground in 3 bevels for ultra sharp incision and piercing.



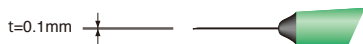
Section of cutting edge

## Distinction of Kai's Stab Knife

Stab Knife blade is made of razor blade with 3 bevel edge-setting.  
The razor edge-setting method ensures the consistent sharpness and precision of Stab Knife.



## Regular Type



<b>A-0F</b> angle 0°	<b>A-15F</b> w=1.7mm angle 15°	<b>A-225F</b> w=1.7mm angle 22.5°
<b>A-30F</b> w=1.7mm angle 30°	<b>A-45F</b> w=1.7mm angle 45°	

## Safety Type

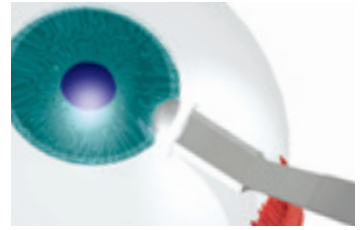


<b>SK-A15</b> w=1.7mm angle 15°	<b>SK-A225</b> w=1.7mm angle 22.5°	<b>SK-A30</b> w=1.7mm angle 30°
---------------------------------------	--	---------------------------------------

# CRESCENT KNIVES

Cataract Surgery / Scleral Tunnel Incision - Scleral Tunnel

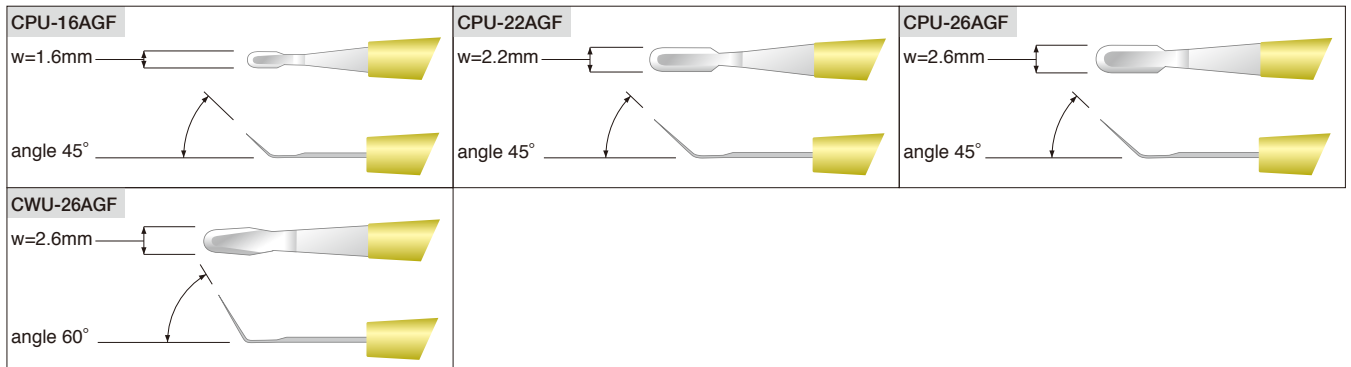
Either straight or tapered sides are available to create the optimal tunnel or flap.



## Regular Type



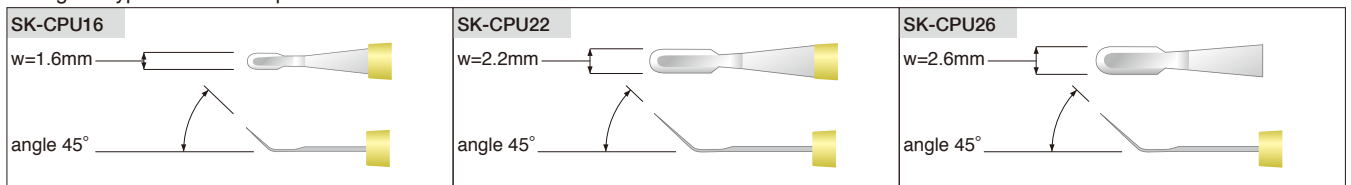
Anti-glare type      Bevel Up



## Safety Type



Anti-glare type      Bevel Up

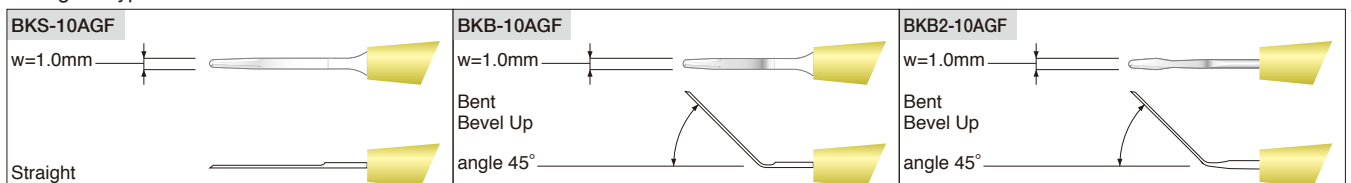


# BLEB KNIVES

Glaucoma / Trabeculectomy / Needling

## Regular Type

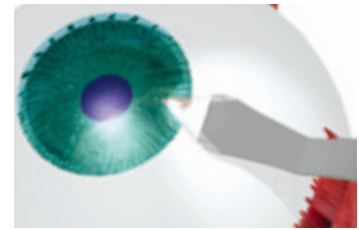
Anti-glare type



# SLIT KNIVES

Cataract Surgery / Scleral Tunnel Incision - Anterior Chamber Entry

Many sizes are available to ensure the exact incision for your choice of phaco tip and operating access. Precision created by computer driven grinding technology.

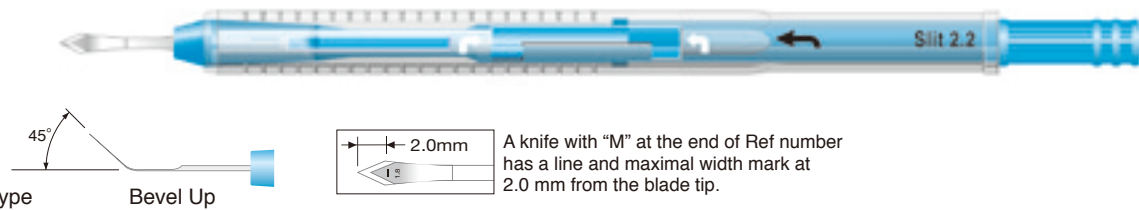


## Regular Type



<b>SLU-13AGF</b> w=1.3mm	<b>SLU-14AGF</b> w=1.4mm	<b>SLU-15AGF</b> w=1.5mm
<b>SLU-16AGF</b> w=1.6mm	<b>SLU-17AGF</b> w=1.7mm	<b>SLU-18AGF</b> w=1.8mm
<b>SLU-19AGF</b> w=1.9mm	<b>SLU-20AGF</b> w=2.0mm	<b>SLU-22AGF</b> w=2.2mm
<b>SLU-23AGF</b> w=2.3mm	<b>SLU-24AGF</b> w=2.4mm	<b>SLU-25AGF</b> w=2.5mm
<b>SLU-265AGF</b> w=2.65mm	<b>SLU-275AGF</b> w=2.75mm	<b>SLU-28AGF</b> w=2.8mm
<b>SLU-285AGF</b> w=2.85mm	<b>SLU-30AGF</b> w=3.0mm	<b>SLU-32AGF</b> w=3.2mm

## Safety Type

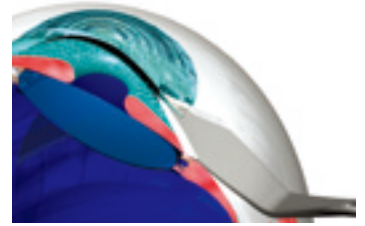


<b>SK-SLU18M</b> w=1.8mm	<b>SK-SLU20M</b> w=2.0mm	<b>SK-SLU22</b> w=2.2mm
<b>SK-SLU23</b> w=2.3mm	<b>SK-SLU24</b> w=2.4mm	<b>SK-SLU28</b> w=2.8mm
<b>SK-SLU30</b> w=3.0mm	<b>SK-SLU32</b> w=3.2mm	

# CLEAR CORNEAL KNIVES

## Cataract Surgery / Clear Corneal Incision - Whole Incision

The latest technology, chemical etching process creates this ultra sharp blade, producing a double bevel perfectly suited to clear corneal incisions. The new geometry allows high manoeuvrability for crafting the phaco self-sealing corneal tunnel.

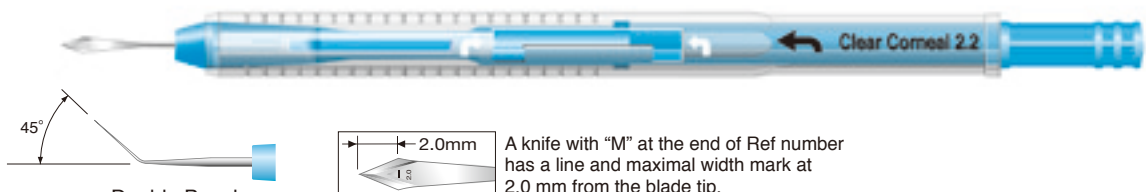


### Regular Type



Anti-glare type	Double Bevel	
CCR-18AGF w=1.8mm	CCR-20AGF w=2.0mm	CCR-22AGF w=2.2mm
CCR-23AGF w=2.3mm	CCR-24AGF w=2.4mm	CCR-25AGF w=2.5mm
CCR-265AGF w=2.65mm	CCR-275AGF w=2.75mm	CCR-28AGF w=2.8mm
CCR-30AGF w=3.0mm	CCR-32AGF w=3.2mm	

### Safety Type

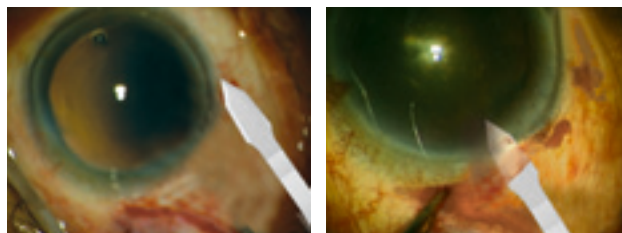


Anti-glare type	Double Bevel	
SK-CCR18M w=1.8mm	SK-CCR20M w=2.0mm	SK-CCR22 w=2.2mm
SK-CCR23 w=2.3mm	SK-CCR24 w=2.4mm	SK-CCR28 w=2.8mm
SK-CCR30 w=3.0mm	SK-CCR32 w=3.2mm	

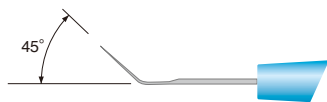
# TRAPEZOID KNIVES

Cataract Surgery / Clear Corneal Incision - Whole Incision

The Trapezoidal shape creates a tunnel with graduated sides, non parallel, to provide more manoeuvrability for the phaco tip.



## Regular Type



Anti-glare type

Bevel Up

<p>TR-12/14AGF</p> <p>w=1.2×1.4mm</p>	<p>TR-125/14AGF</p> <p>w=1.25×1.4mm</p>	<p>TR-15/19AGF</p> <p>w=1.5×1.9mm</p>
---------------------------------------	---	---------------------------------------



# IMPLANT KNIVES

Cataract Surgery / Scleral Tunnel Incision - Incision Widenning for IOL

Manufactured to extend the phaco tip incision to create the exact size required to implant your intra ocular lens of choice.







## Regular Type



Anti-glare type

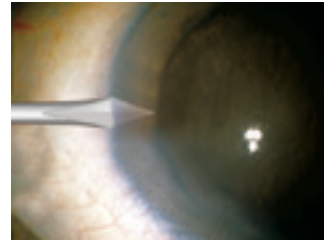
Bevel Up

<p>RNU-41AGF w=4.1mm</p> 	<p>RNU-51AGF w=5.1mm</p> 	<p>RNU-52AGF w=5.2mm</p> 
<p>RNU-56AGF w=5.6mm</p> 		

# MVR KNIVES

Cataract Surgery / Scleral Tunnel Incision - Side port  
 / Clear Corneal Incision - Side port  
 / Retina Surgery - Scleral Incision

Specifically designed for very precise vitrectomy surgery.  
 Available in both straight and angled styles.



## Regular Type



<p><b>VK-23GF</b></p> <p><math>\Phi=0.6\text{mm}</math></p> <p><math>\Phi=0.6\text{mm}</math></p> <p>Straight</p>	<p><b>VK-20GF</b></p> <p><math>\Phi=0.9\text{mm}</math></p> <p><math>\Phi=0.9\text{mm}</math></p> <p>Straight</p>	<p><b>VK-19GF</b></p> <p><math>\Phi=1.0\text{mm}</math></p> <p><math>\Phi=1.0\text{mm}</math></p> <p>Straight</p>
<p><b>VKB-20GF</b></p> <p><math>\Phi=0.9\text{mm}</math></p> <p><math>\Phi=0.9\text{mm}</math></p> <p>Bent</p>		

## Safety Type

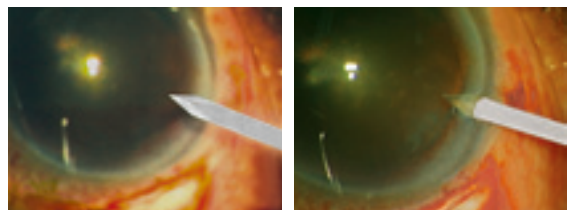


<p><b>SK-VKB20G</b></p> <p><math>\Phi=0.9\text{mm}</math></p> <p><math>\Phi=0.9\text{mm}</math></p>
---

# PARACENTESIS KNIVES

Cataract Surgery / Scleral Tunnel Incision - Side port  
 / Clear Corneal Incision - Side port

Produced by grinding technology for highly accurate second instrument access. Post operatively, completely self sealing.



## Regular Type



<p>Anti-glare type</p> <p><b>PCT-10F</b></p> <p>w=1.0mm</p>	<p><b>PCB-10AGF</b></p> <p>w=1.0mm</p> <p>angle 45°</p>
---	---

# SIDEPORT KNIVES

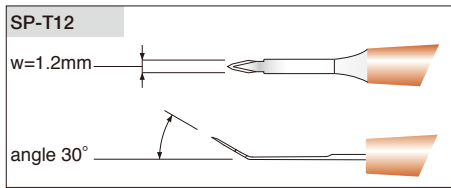
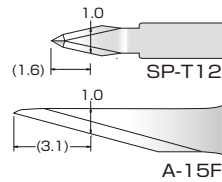
Cataract Surgery / Scleral Tunnel Incision - Side port  
/ Clear Corneal Incision - Side port

## Regular Type

### SIDEPORT KNIFE TRAPEZOID

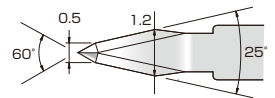
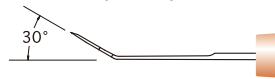
#### Suitable for Eyes with Shallow Anterior Chambers

Compared to the 15 degree or 22.5 degree stab knives, Sideport Knife Trapezoid can create trapezoidal incision with short incision distance. It minimizes the risk of damaging nucleus and especially effective to the patients with shallow anterior chambers. Also, the incision size can be adjusted by the depth of penetration, and it is easy to enlarge the incision with the sufficient length of the blades on both sides.



#### Improved Maneuverability

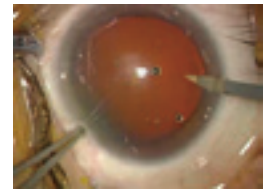
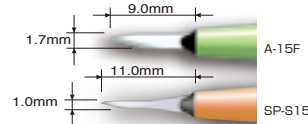
It is angled at 30 degree, and the head is compact. These features make penetration into the eyes at the ideal angle possible even for the patients with deep set eyes or narrow palpebral fissures.



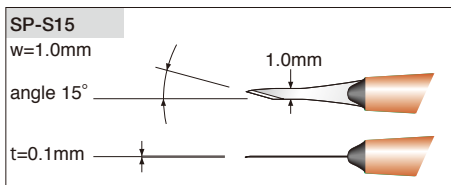
## Regular Type

### SIDEPORT KNIFE STRAIGHT

A 1 mm-width sideport can be stably prepared. The 15°-angle-blade allows easy expansion of incision.



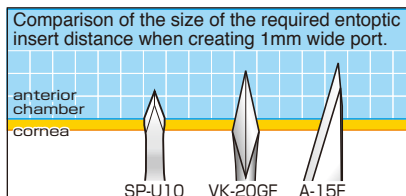
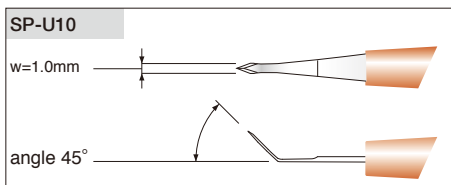
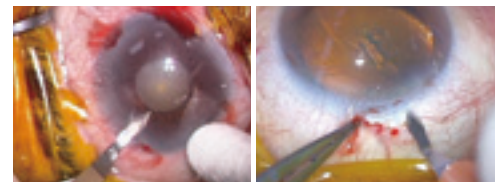
It can be used in the same way as a stab knife.



## Regular Type

### SIDEPORT KNIFE UTILITY

Able to make a stable sideport.  
Can easily create a port when using a retractor.  
Able to incise lamellar sclera with a single sideport knife utility.



# MICROSURGERY KNIVES

MIKROCHIRURGISCHES EINMALMESSER  
BISTOURI POUR MICROCHIRURGIE JETABLE  
BISTURI MONOUSO PER MICROCHIRURGIA  
CUCHILLETE DE MICROCIRUGIA DESECHABLE  
BISTURI DE MICROCIRURGIA DESCARTÁVEL  
TEK KULLANIMLIK MİKROCERRAHI BİÇAK



Product specifications may change without notice.



**kai Europe GmbH**

Kottendorfer Straße 5, 42697 Solingen, Germany



**kai industries co., ltd.**

1110 Oyana, Seki City, Gifu Pref., 501-3992, Japan

